



PRODUCT INTRODUCTION

Pollycor Shellboard

2019

● Pollycor Shellboard

Pollycor Shellboard is a successful innovation of construction material and has been accepted by many countries. The Pollycor Shellboard can reach more than 60 reusable times, no need mold release agent, Nailed easily and stably etc. It's Green, Energy Efficient and Economical.

The product is widely applied in many areas instead of wood such as:

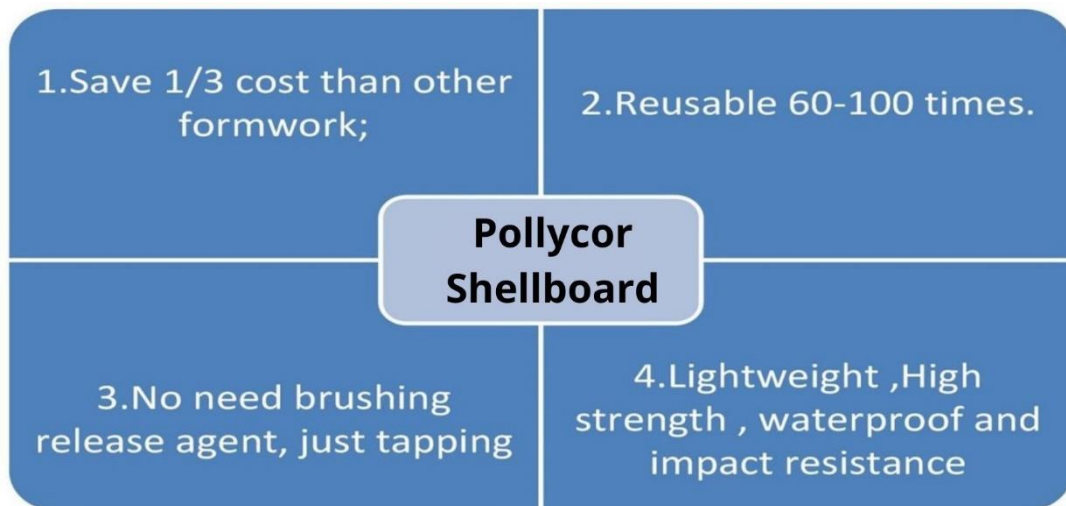
- (1) Construction
- (2) Hydraulic engineering
- (3) Water-power engineering
- (4) Bridge and Tunnel project,



● Specifications

Thickness	Size	Weight
12mm	915mm × 1830mm	12-13kg
	1220mm × 2440mm	21-23kg
15mm	915mm × 1830mm	13-14kg
	1220mm × 2440mm	24-25kg
18mm	915mm × 1830mm	14-16kg
	1220mm × 2440mm	26-28kg
Specific Size Custom-Made		

● Product Superiority



1. Light weight. Pollycor Shellboard is Light weight, high strength, high hardness, impact resistance and wear resistance.

2. Surface is smooth. Its surface is smooth, bright and clean; Concreting and forming effect is very good .

3. Easy to demould. No need to brush the release agent, just tap, plate template falling off, effectively shorten the working time, speed up the construction progress.

4. Easy to process. Sawing, drilling and nailing are all available. Formwork system can be combined vertically and horizontally optionally.

5. Easy to remove. Removing is convenient, quick and safe, and the supporting is also easy to operate, advantageous to the organization construction, effectively improving the construction schedule.

● Contrast Diagram

Pollycor Shellboard VS Other Formwork				
Items Compared	Pollycor Shellboard	PVC Formwork	Wooden Formwork	Aluminum Formwork
Price (usd/m ²)	13.3	11.9	5.6	126.9
Recycle (times)	60-100	20-30	4—6	80-100
Drop Test (10m)	✓ Unbroken	Slightly damaged	× cracked	× destroyed
Wear Resistance	✓	✓	×	✓
Water Immerse	✓ No deformation	✓ No deformation	×	✓ No deformation
Release Agent	✓ No need	✓ No need	×	×
Nailing	Easy to nail and stable ✓	×	✓	×

● Property Data Sheets



Items		Technical Requirements (PP hollow plastic formboard)	Inspection Results			Test Standard
			12mm	15mm	18mm	
Shore Hardness (D)		≥ 58	64	65.5	69	GB/T2441-2008
Impact Strength (KJ/m ²)		≥ 30	32.2	33.7(C)	35.8	GB/T1043.1-2008
Rate of Change with Heat (%)	Transverse	± 0.2	-0.1	-0.1	-0.1	JG/T418-2013 7.2.7
	Longitudinal	± 0.2	-0.1	-0.1	-0.1	

● General Operation Notes

- (1) Method of use as well as wooden formwork, Polycor Shellboard reinforcement direction with batten direction placed in cross shaped.

(2) When cast-in-place the flat plate, spacing between the keels should be 20 ~ 25 cm,

and the spacing between the wall plate and keel should be 10 ~ 20 cm.

(3) Hongwei plastic Pollycor Shellboard system do not need releasing agent.

The seam-line between formwork boards should be taped.

(4) The length of nail generally about 30 ~ 35 mm. The strength to drive nails should be moderate.

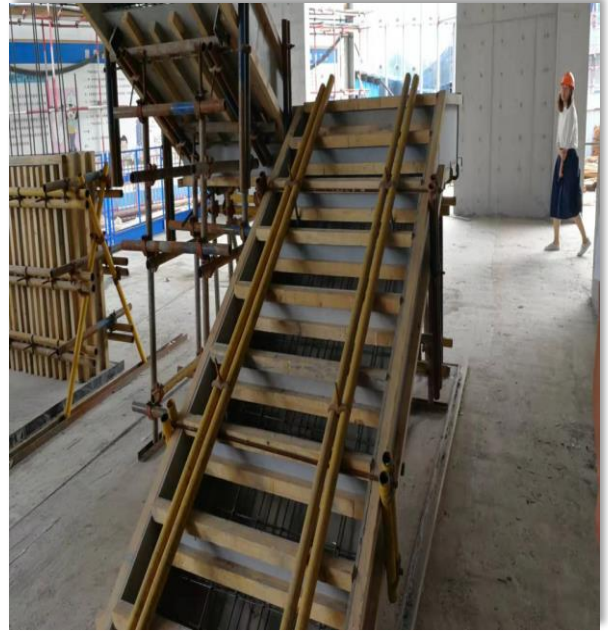
(5) When removing the Pollycor Shellboard, please start from the small part of one end; the support and the plates should be removed at the same time aiming at preventing the template widespread drops. Don't let the corner drop on the ground vertically.

(6) The Pollycor Shellboard system accesses to be mixed used with wood veneer, bamboo veneer and other material plate.



● Construction Site Display





● The effect of demoulding



Shear Wall

Column



Roof and Beam

● Packing and shipping

Packing	Covered with PE film or carton boxes on pallet with belts.
Delivery time	1-30 days since receipt of PO and down payment.
Special size	We provide cutting services for special sizes





**Engineered
Wood
Products inc.**

<https://ewpinc.co/>

3612 Ventura Drive East.
Lakeland, Fl. 33811
Tel: 863-336-5611