

**NEW
& HOT!!!**

ECOSTRUCT FIRE LVL BEAM

GROUNDBREAKING FIRE RESISTANCE



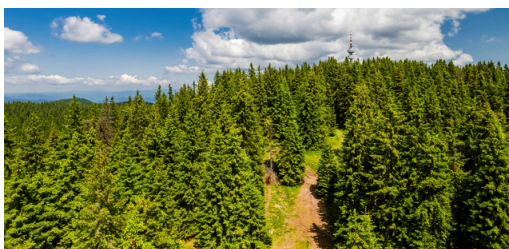
EcoStruct Fire LVL (Laminated Veneer Lumber) **Beams** from Engineered Wood Products Inc. offer unmatched strength and durability and bring flame resistance to a brand-new level. Made from layers of FSC-certified timber veneers and advanced adhesives, they meet the highest industry standards. With an **ASTM E-84 Class A rating**, these beams provide superior fire resistance, ensuring safety and compliance. Their high strength-to-weight ratio and dimensional stability make them ideal for load-bearing applications, while their resistance to chemicals and moisture ensures longevity.

QUALITY



Our products are crafted in a 100,000 square foot facility using sustainable materials and eco-friendly practices. Certified to ICC-ES 2.1E standards, our commitment to quality, sustainability, and customization sets us apart. ICC-ES certification ensures our engineered wood products meet strict building code requirements for construction use.

SUSTAINABILITY



The FSC (Forest Stewardship Council) certification guarantees our timber is sourced from responsibly managed forests meeting strict environmental, social, and economic standards. This ensures our wood products support biodiversity conservation and sustainable forestry practices. Choosing FSC-certified timber promotes responsible forest management and environmental stewardship.



LVL LUMBER



Experience the robust performance of Engineered Wood Products' LVL, tailored for heavy-load spans and multi-span applications. Our LVL utilizes precision-tested Larch and Spruce veneers, guaranteeing exceptional dimensional stability and uniformity, surpassing conventional lumber standards.



DESIGN PROPERTIES

PROPERTIES - LVL BEAMS		
THICKNESS (in)	WIDTH (in)	WEIGHT (plf)
1.75	3.5	1.94
1.75	5.5	3.05
1.75	7.25	4.02
1.75	9.25	5.13
1.75	9.5	5.26
1.75	11.25	6.23
1.75	11.875	6.58
1.75	14	7.76
1.75	16	8.87
1.75	18	9.98
1.75	24	13.3

Reference design values for Engineered Wood Products LVL are certified in ICC-ES ESR-5299 for use with the 2018 NDS.

Values are provided for available thicknesses of 1.5 and 3.5 inches, width from 3.5 to 52 inches, and lengths up to 48 feet.



GENERAL INFORMATION

Handling and Storage Guidelines:

Protect LVL from weather and store flat.

Avoid ground contact during storage.

Use wrapped bundles with 2x4 stickers for support and air circulation.

Shield from weather on job sites before and after installation; suitable for covered, dry conditions only.

Do not cut, drill, or notch LVL except as specified here: [Engineered Wood Products LVL Technical Guide](#).

Avoid installing wet or visually damaged products.

Apply water repellent sealer to freshly cut ends of factory-sealed LVL to prevent moisture ingress.

Installation Instructions

For comprehensive installation instructions on LVL, including connections, notching, and hole locations, visit our technical documentation at www.ewpinc.co. For further details, feel free to reach out to us.

For Engineers, Designers, and Architects: For full specifications for your design project, our entire product line is available on the I-Struct library.